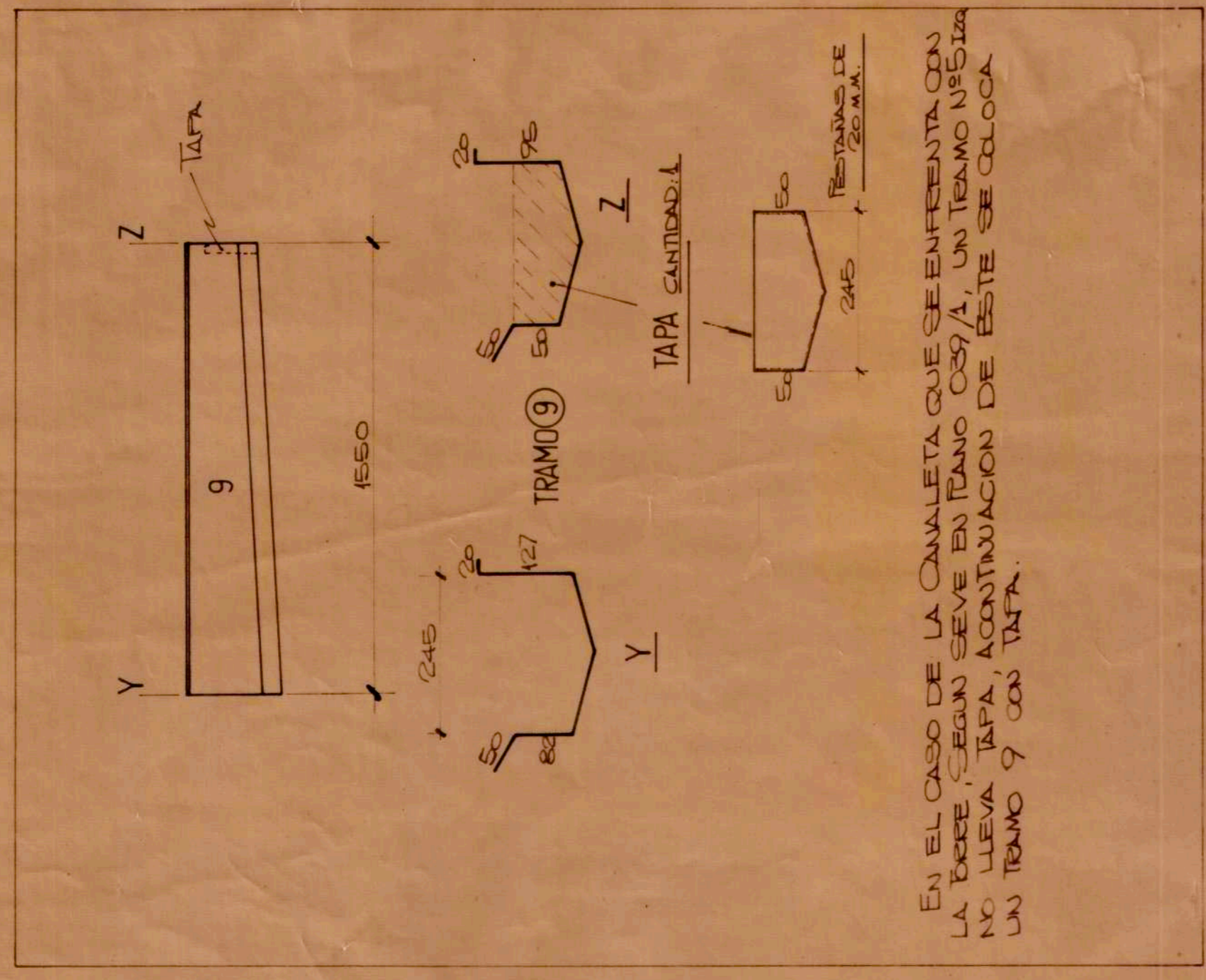
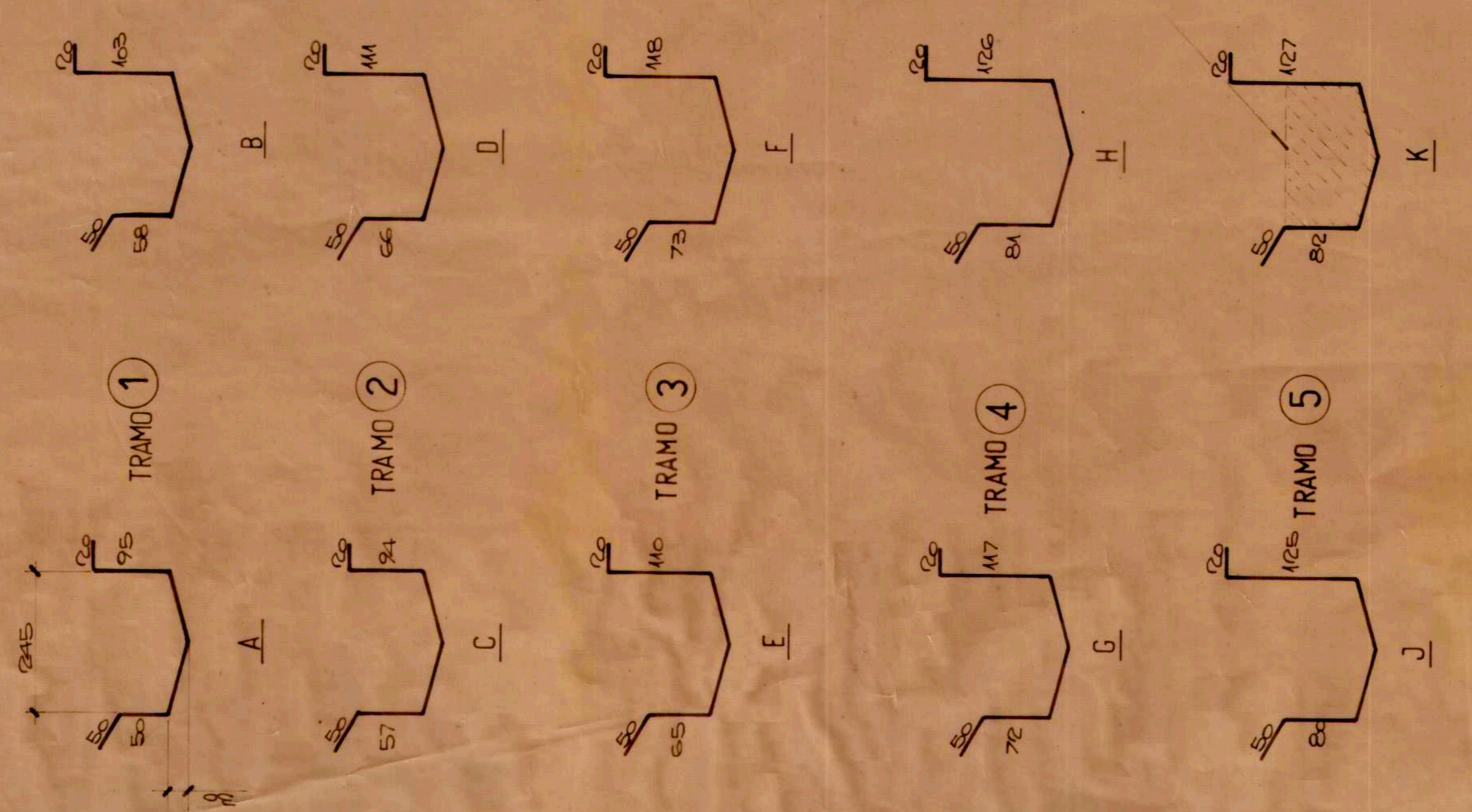
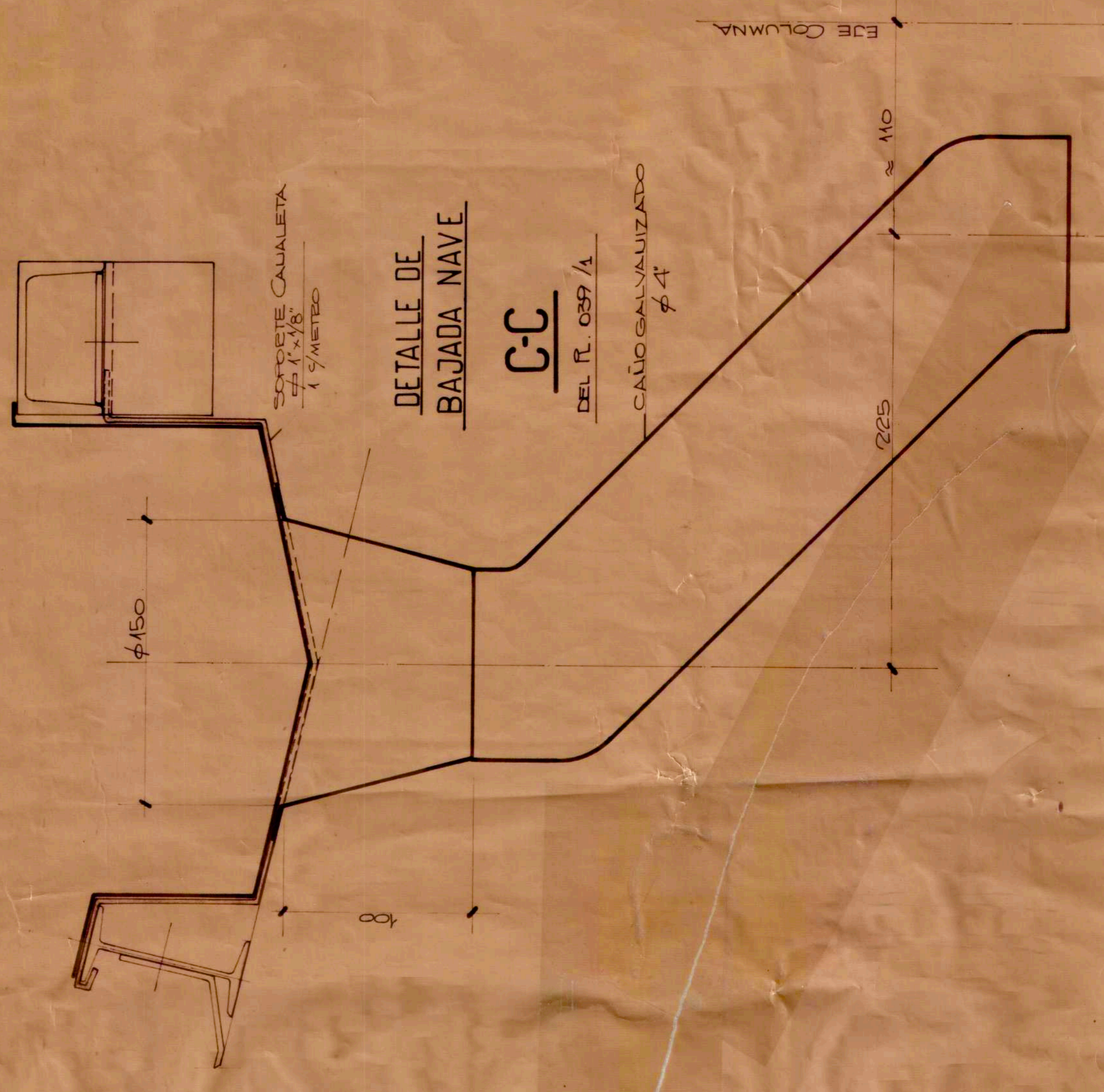
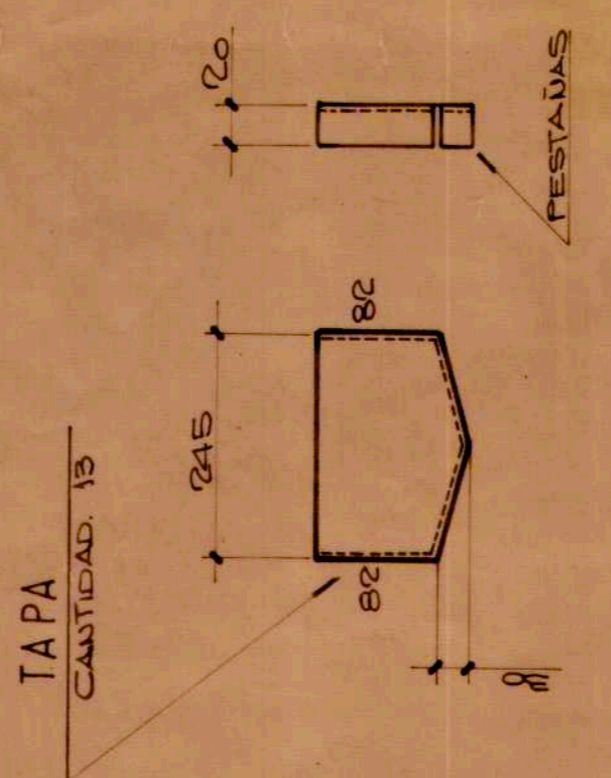


DETALLE CANALETA NAVE

MATERIAL: CHAPA GALVANIZADA

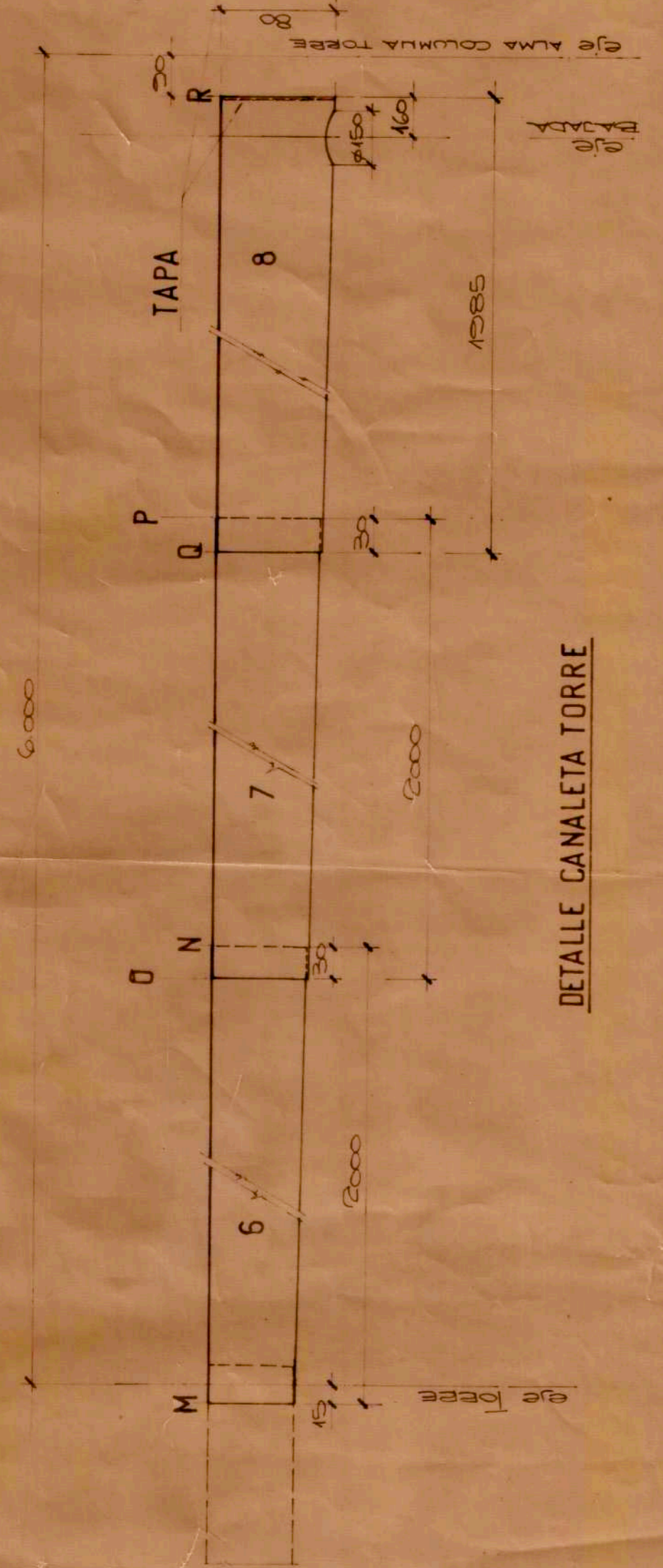


EN EL CASO DE LA CANALETA QUE SE ENFRENTA CON LA BOVEDA (SEGUN SE VE EN TRAMO 039/1), UN TRAMO USARÁ UNA TAPA (VERA), ADICIONANDO DE ESTE SE COLOCA UN TRAMO 9 CON TAPA.



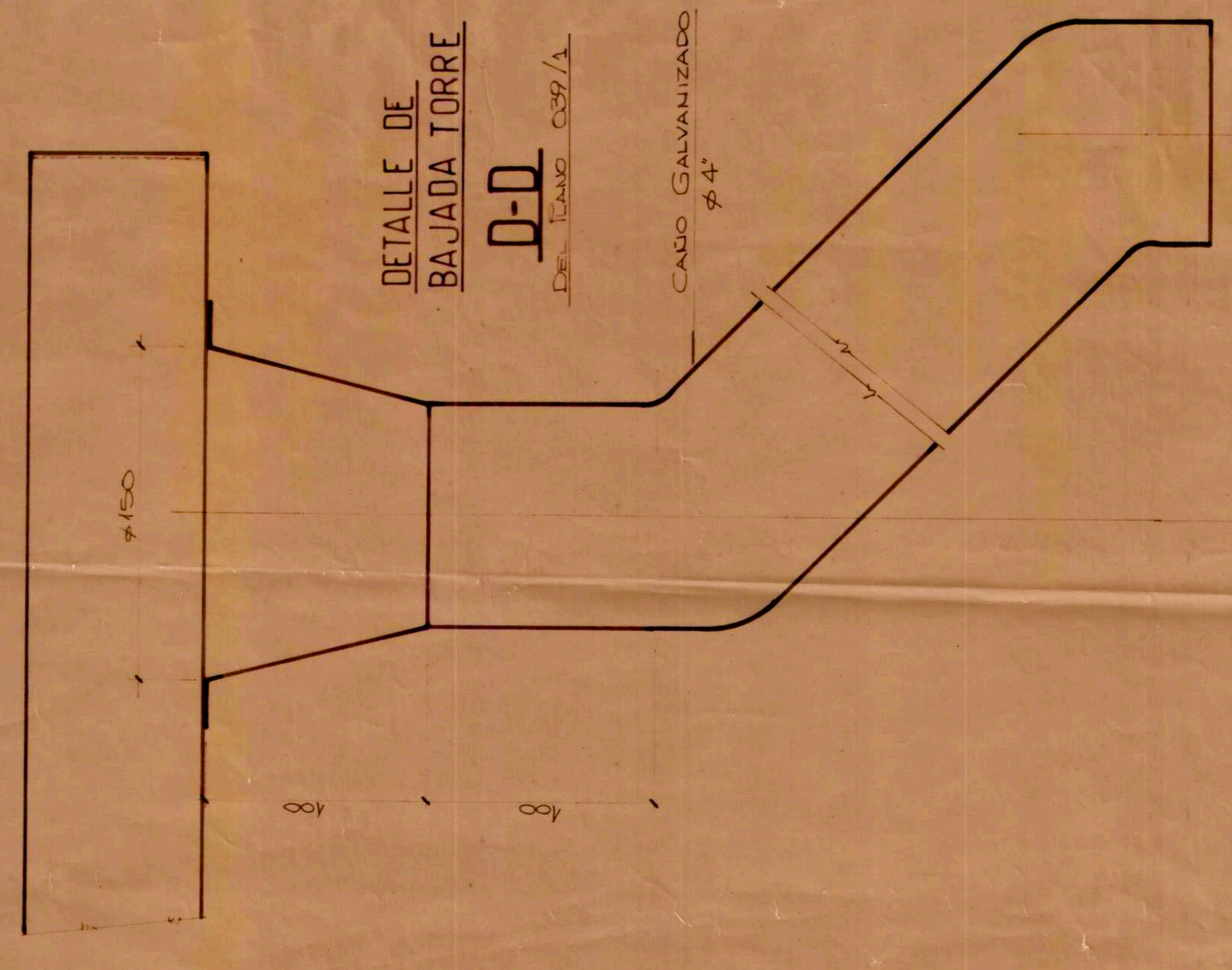
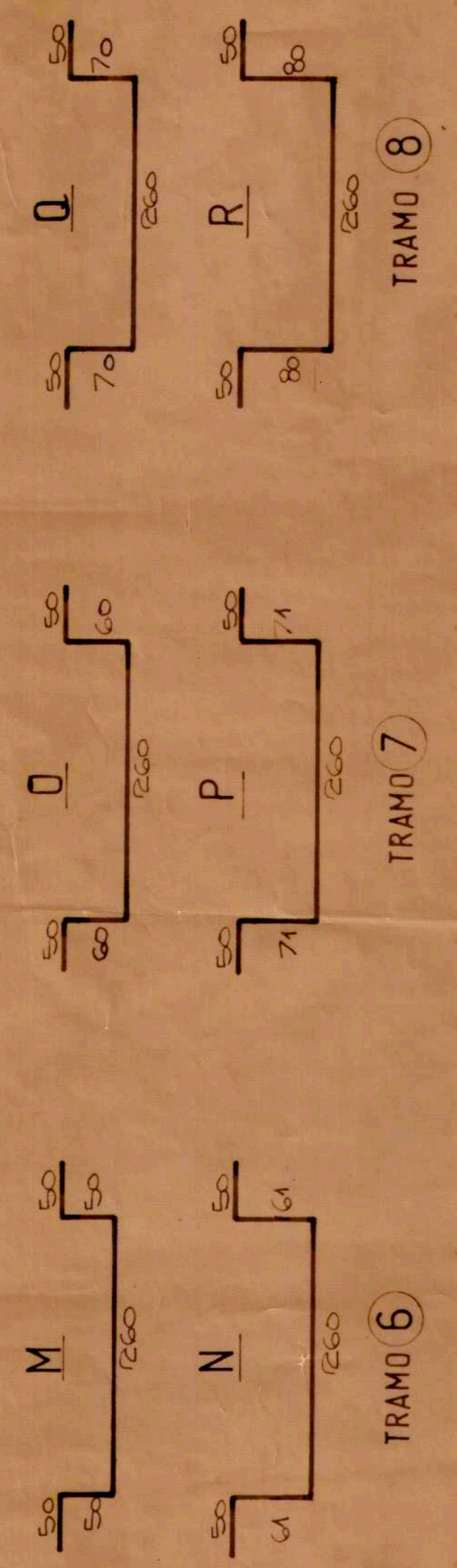
DETALLE DE BAJADA NAVE

C-C  
DEL N. 039/1  
CARGO GALVANIZADO  
φ 4"



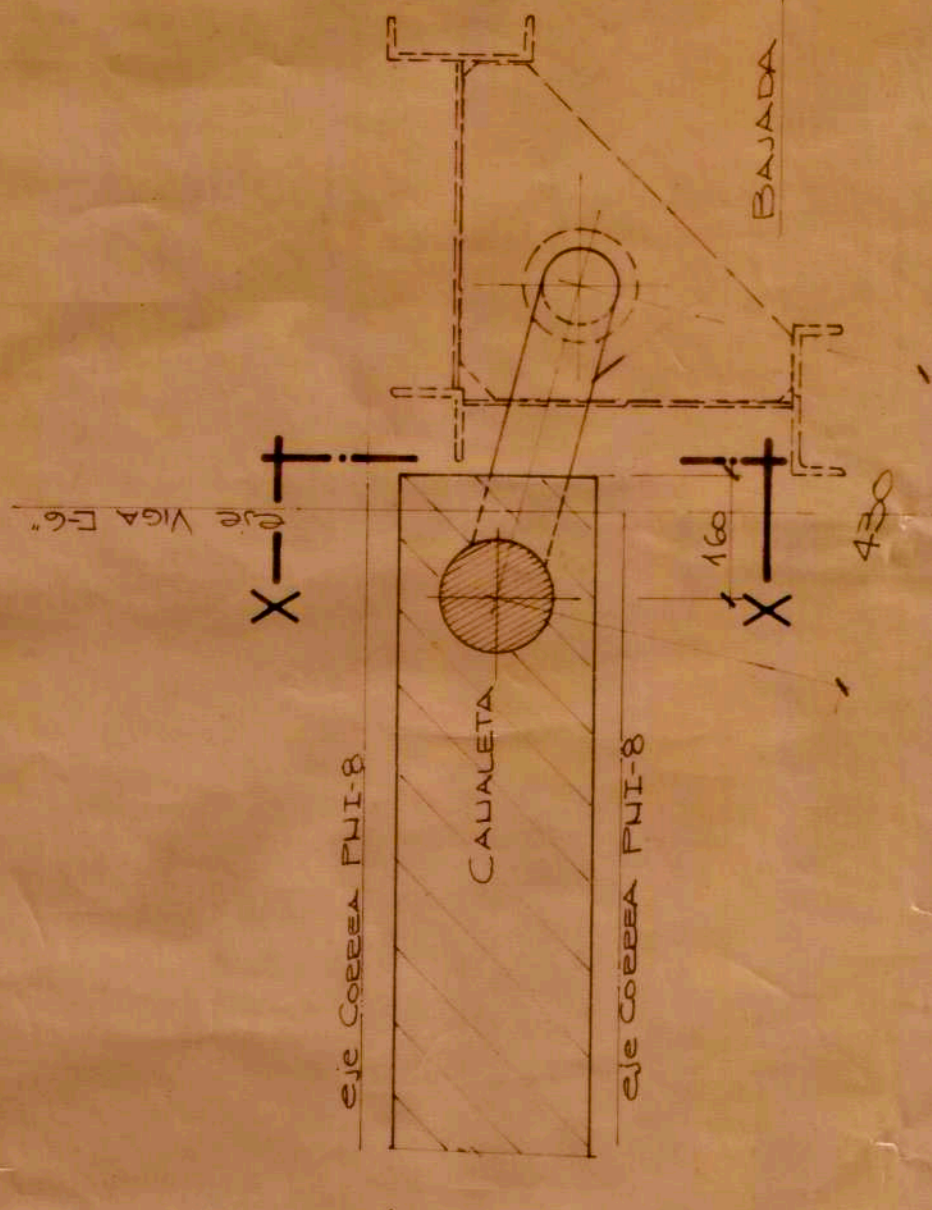
DETALLE CANALETA TORRE

MATERIAL: CHAPA GALVANIZADA

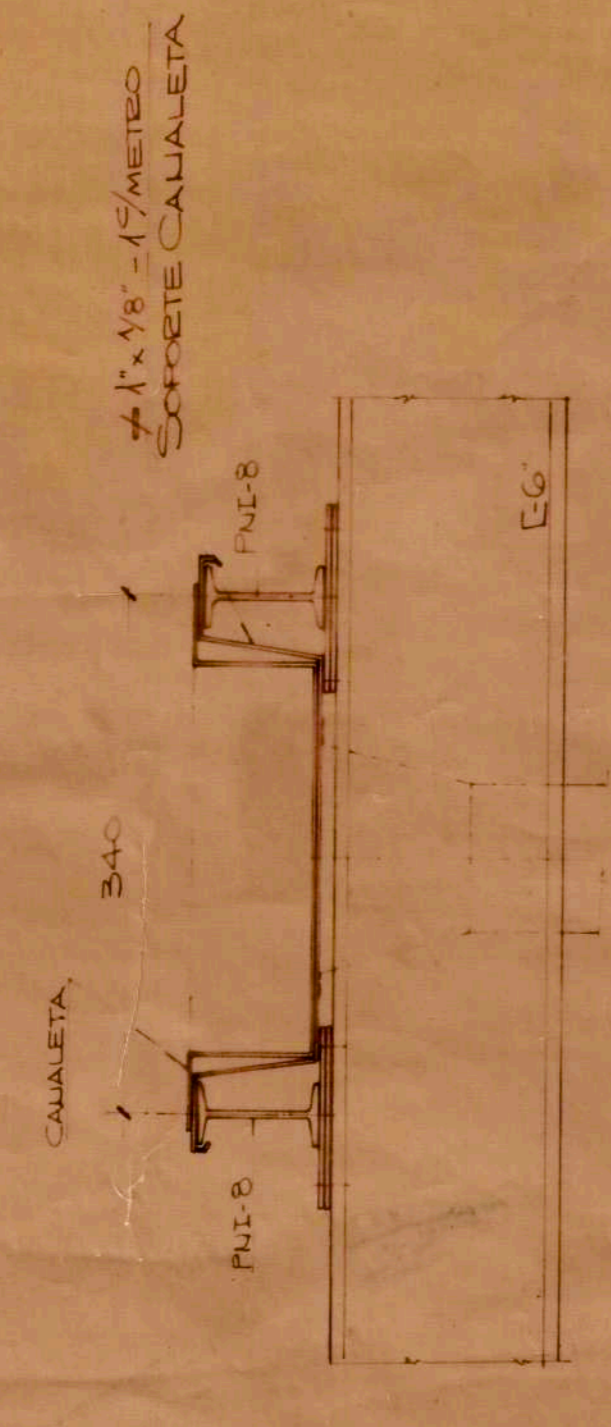


DETALLE DE BAJADA TORRE

D-D  
DEL N. 039/1  
CARGO GALVANIZADO  
φ 4"

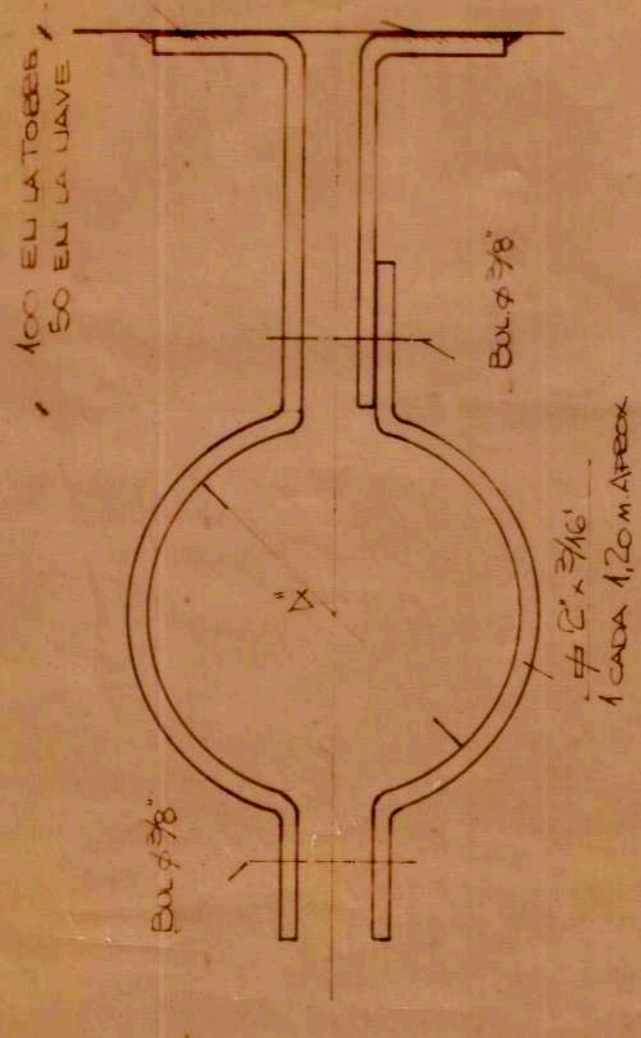


ESQUEMA UBICACION



GRAMPAS PARA FIJACION  
CARGOS DE BAJADA

VISTA: X-X  
DEL N. 1.0



CAJALETAS NAVE		CAJALETAS TORRE	
TRAMO	CAJUT.	TRAMO	CAJUT.
1 TAPA	1	1 TAPA	1
2 TAPA	1	2 TAPA	1
3 TAPA	1	3 TAPA	1
4 TAPA	1	4 TAPA	1
5 TAPA	1	5 TAPA	1
6 TAPA	1	6 TAPA	1
7 TAPA	1	7 TAPA	1
8 TAPA	1	8 TAPA	1
9 TAPA	1	9 TAPA	1

1319/C4-01-048